



Installation instructions for 6 and 9 metre Masts

Mast erection is best done with 2 people. Check with your local council to determine if a permit is required to erect a mast. Mast erection is best done on a still day!

WARNING: Check that installation location is free of overhead power lines and subterranean obstructions before beginning mast erection!

1. Layout and check all mast kit components. Using a mallet or hammer drive in the peg spear – and the 3 iron pegs. The iron pegs should be 4.5 metres from the peg spear and evenly spaced. Join 3 mast poles to use as a 4.5 metre guide.
2. Fit a galvanised clamp to 10cm from the unswaged end of a mast pole. This pole will be the bottom mast pole.



Figure 1 Clamp on unswaged end of mast pole

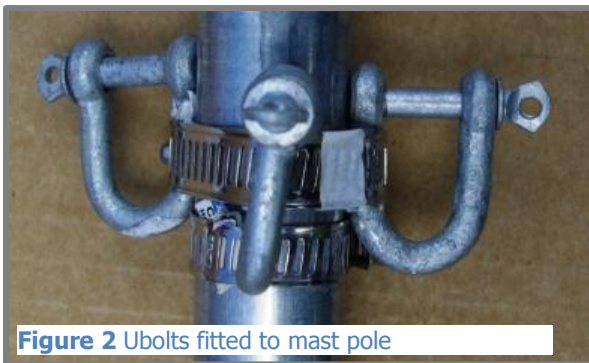


Figure 2 Ubolts fitted to mast pole

3. Fit a galvanised clamp and 3 U bolts approximately 40 cm from the swaged end of a mast pole – this pole will be the top mast pole
4. Fit a galvanised clamp and 3 u bolts approximately 10 cm from the swaged end of a mast pole – this pole will be the 3rd mast pole from top of the mast



Figure 3 Top pole with Power Predictor

5. Attached Power Predictor to top mast pole using cable ties



Figure 4 Mast laid out with guys attached

6. Assemble the mast and attach six guy ropes – the 3 longest guys need to be attached U bolts on the top pole and the other guys to the U bolts on the 3rd from top pole.
7. Loosely attach the toggle ends of one long guys and one other guy to each peg

8. Have one person hold the foot of the mast, while the second person and gently raises the mast beginning at the top of the mast. Be careful not to bend the mast! Place the foot of the mast in the peg spear when the mast is erect.
9. While one person holds the mast erect – have the other person gently tighten the guys until they are supporting the mast.
10. Adjust the guys as necessary to ensure the mast is straight and vertical and the guys are tight. Check the mast guys at least weekly and tighten as necessary.

“How much can you save with renewable energy?”



Mast Kit Contents

9m kit contains

- 3 x 450 mm iron pegs
- 1 x Tent Peg Spear
- 3 x 9m UV stabilised guy ropes
- 3 x 11m UV stabilised guy ropes
- 6 x 1.5m 25mm galvanised poles
- 1 x pole end cap
- 6 x UV stabilised Cable ties
- 6 x U shackles
- 5 x Galvanised clamps

6 m kit contains

- 3 x 450 mm iron pegs
- 1 x Tent Peg Spear
- 3 x 9m UV stabilised guy ropes
- 3 x 7m UV stabilised guy ropes
- 4 x 1.5m 25mm galvanised poles
- 1 x pole end cap
- 4 x UV stabilised Cable ties
- 6 x U shackles
- 5 x Galvanised clamps

“How much can you save with renewable energy?”

Wise Wind Inc
ABN 89 136 983 385
Aust/NZ Distributor of Power Predictor

m +61 417 316 642
o +61 3 8684 9466
f +61 3 8678 3939

p PO Box 197 Hawthorn VIC 3122
e hello@powerpredictor.com.au
w www.powerpredictor.com.au